



POST & RAIL FENCING

FARM FENCES.SORTED.



AUSTRALIAN FAMILY OWNED

100% Australian owned and operated by a family just like yours. We are committed to supporting the vibrant, hardworking people who make rural Australia thrive, and truly understanding the needs and challenges of fencing in these areas.



EXPERT FENCING SUPPORT

We're here with a smile and the expertise to guide you every step of the way. Our sales and support team aren't just knowledgeable; they're passionate about helping you find the perfect solutions for any fencing challenge. Whether it's a question about installation, advice on maintenance, or any other inquiry, we're all ears and always here to help.



100% PRODUCT GUARANTEE

We're more than just about selling gate hardware; we're about making sure customers are absolutely satisfied with every purchase. If for any reason you're not entirely pleased with a purchase—whether it's a matter of performance, quality, or simply not meeting the specific needs, we're committed to making it right.



STOCKISTS COUNTRY WIDE

Our products are accessible from almost any local rural store across Australia. With over 800 stockists nationwide, we've made it easy for you to find Rotech. Or if you want a quote first, we have a simple online quoting system where you can get an instant quote from your preferred stockist.



WE LISTEN TO YOUR FEEDBACK

We work closely with Australian farmers to constantly adapt and improve our innovations to better suit farmers' needs. We are committed to making ourselves accessible to you and are always looking for ways to connect and hear feedback.

CONTENTS

END BRACKETS	3
WHY PICK RAILTIGHT	5
CUSTOMER TESTIMONIALS	6
INSTALL GUIDE	9
CATTLE RAIL JOINER	11
QUOTE GUIDE	13



RAILTIGHT END BRACKET PAIRS

END BRACKET PAIR - FLAT



RAILTIGHT END BRACKET PAIR

CRE11542

SIZE - 115 x 42mm | POST - ≥ 75 mm

INCLUDES - 2x End Brackets, 9x Tek Screws

BOX QTY - 10 (5 Pairs)

Series 500 Tek - no pre-drilling

Unique cut-out
allowing 40° adjustment

Hot dipped galvanised

POST

75mm, 90mm, 100mm,
125mm, 150mm



Contracting?

Increase your efficiency with
a 5min install!

“ They are great. Save a lot
of welding, certainly saved
me a lot of time & the
customer a lot of money! ”

DAN - WIMMERA RURAL

END BRACKET PAIR - ROUND



Bracket conforms to post radius. **No grinding required to bevel end of each rail.**

RAILTIGHT END BRACKET PAIR - ROUND

CRER11542

SIZE - 115 x 42mm | POST - $\geq 80\text{NB}$

INCLUDES - 2x End Brackets, 9x Tek Screws

BOX QTY - 10 (5 Pairs)



80NB, 90NB, 100NB,
125NB, 150NB



Hot-dipped galvanised.

- No welding or grinding.
- No cleaning and painting.
- No rust.

WHY PICK RAILTIGHT



5 MINUTE INSTALL

NO CUTTING, NO GRINDING, NO WELDING, NO CLEANING, NO PAINTING

SAFE FOR HORSES & OTHER LIVESTOCK

The brackets smooth, sleek design presents an **anti-bruise finish**. Minimizing the risk of injury to horses and livestock.

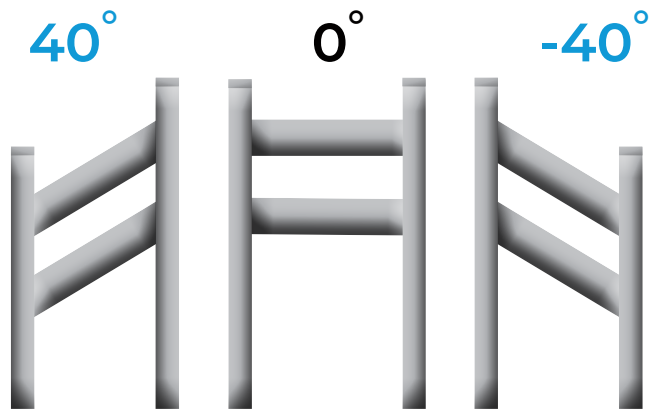
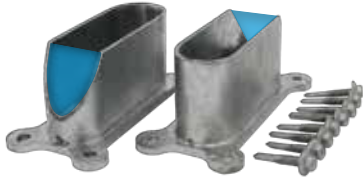
HIGH QUALITY FINISH

The **fully enclosed design** ensures a finished look and no welding minimises the risk of corrosion and touch up paint. This design quality reflects a **professional installation standard**.

QUICK, EASY, REPAIR

Replace damaged rail in 10 minutes.
Simply unscrew the bracket. Slide off the damaged rail and install a new length.

UNIQUE CUT-OUT ALLOWING
FOR 40° ADJUSTMENT.



“ The cut-out compensates for the elevation change which saves a lot of time, no welding and measuring angles! They come up a treat! ”

JEREMY - ARMIDALE RURAL SERVICES



“ Used on both timber and steel they saved us weeks of work! We were able to get all the rails level, sitting within 1mm of each other. They made the project more accurate and faster. Extremely impressed! ”

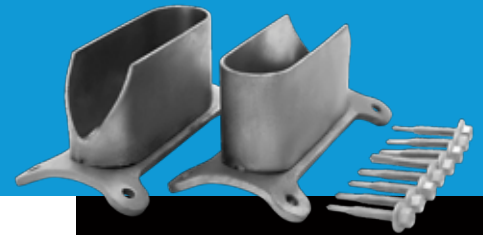
MG STEEL



Kate Ramm - NSW

Powder coated her RailTight fence
and the result is stunning!!

HOW TO INSTALL THE CATTLE RAIL END BRACKET



1 INSTALL THE POSTS. YOU CAN USE CONCRETE OR DRIVE IN.

We recommend 100-80 NB round or 75-100 RHS for steel posts.

Set a string line for the top of your posts for extra guidance - Trim down any that are too tall.

Remember to swap out tek screws when using timber posts.



2 MARK THE HEIGHT YOU WANT TO PLACE THE RAILS.

Measure from the top of the post to ensure rails are parallel.

However if on a slope, run an angled string line from the top of the slope to the bottom to ensure the rails are installed in line.



3 SCREW ON YOUR FIRST END BRACKET.

Fasten the first two tek screws diagonally across corners for top stability.

Bracket cut-out facing,
UPWARDS FOR DOWNWARD SLOPE.

Bracket cut-out facing,
DOWNWARDS FOR UPWARD SLOPE.



4 PLACE THE RAIL ONTO THE 1ST BRACKET. SLIDE OTHER END OF THE RAIL INTO NEXT BRACKET.

When concreting, install rails as you go, brace the post, then concrete once everything is in place. Otherwise, to make sure your spacing is accurate, lay out the posts and mark their exact lengths to account for variation.



5 SLIDE THE RAIL AND 2ND BRACKET INTO PLACE, AND SCREW IN USING THE SCREWS PROVIDED.

If on flat ground, check rail with a level.

REPEAT STEPS 3-5 FOR EACH RAIL.

6 FOR ADDED STRENGTH.

Add an extra screw into the side of your bracket through to the rail.

NOTE

WHEN SPACING OUT YOUR NEW POST & RAIL FENCE. FIRST INSTALL THE TOP RAIL 50-100MM FROM THE TOP.

- If installing 3 rails or more, space the rails evenly from the top rail.
- If installing just 2 rails, install your 2nd rail halfway down.



SCAN
TO
WATCH



AND THAT'S HOW EASY IT IS TO INSTALL
THE CATTLE RAIL END BRACKET!



CATTLE RAIL JOINER

NEW RELEASE!



RAILTIGHT CATTLE RAIL JOINER

CRJ11542

SIZE - 115 x 42mm | SUITS RAIL SIZE - 115 x 42mm

INCLUDES - 1x Joiner, 5x Tek Screws

BOX QTY - 10

**HEAVY
DUTY!**

HOLDING
300KG+
LESS THEN
10MM SAG!



**STRONGER. SMARTER.
BUILT TO LAST.**



SCAN
TO
WATCH

Extra-Strong & Reliable

200mm long, more than **twice** the length of standard joiners.



Fast & Easy Installation

No welding or grinding required. Securely attach with **HD series 500 deep-driller tek screws**.



Sleek & Horse Safe

Designed with an anti-bruise finish for a smooth, **seamless join**.

Durable & Built to Last

Hot-dipped galvanised for maximum corrosion resistance, built for **Australia's harshest conditions**.



GET AN INSTANT ONLINE QUOTE & PLACE YOUR ORDER INSTORE!

1 VISIT
<https://rotechrural.com.au/products/railtight/>

2 CHOOSE YOUR PRODUCTS



RAILTIGHT END BRACKETS (PAIR)

\$ INC. GST PER UNIT

Post Type



Rail Size

115x42mm

Quantity

Single

Box Discount

Clear

- » Note: All RailTight End Brackets are sold as a pair
- » CODE: CRER11542
- » SIZE: 115x42mm
- » POST: 80NB or larger
- » UNITS PER BOX: 5 Pairs

3 ADD TO QUOTE

\$ INC. GST PER UNIT

QUANTITY

- 5 +

SUBTOTAL:

\$

ADD TO QUOTE

4 PROVIDE YOUR CONTACT DETAILS

Fields marked with an * are required

First Name *

Last Name *

Phone *

Email *

Email will be used for quote only.

Your Postcode *

5 PICK YOUR PREFERRED STORE

PREFERRED STORE

SHOW STORES

YOUR TOWN

Enter a location

Optional: Enter A Town/Suburb & Click 'Show Nearby Stores' To See A List of Stores.

Your preferred store will receive a copy of your quote request and contact you to confirm the quote details. If you choose not to select a store, only you will receive a copy of your quote and you will need to follow up with a Rotech Rural stockist to place your order.

6 SUBMIT

Rotech Rural supports local businesses, so all our products are only sold through local stores. Once you submit your quote request, you will be able to contact your preferred Rotech Rural stockist to finalise your order. If you do not have a preferred stockist, Rotech Rural will help put you in touch with a nearby rural store to finalise your quote.

Submit

SCAN
TO
WATCH



NEED MORE INFO OR HELP? GET IN CONTACT WITH US.

ROTECH RURAL PRODUCT RANGE

To explore more of our high quality, innovative rural fencing hardware:

VISIT - www.rotechrural.com.au



STAYTIGHT



RAILTIGHT



HINGES



LATCHES



STOCKYARD FITTINGS



FENCE FITTINGS & ACC



CHAIN & ACC



POST CAPS



TOOLS



FARM FENCES.**SORTED.**

T - 1800 004 940 E - sales@rotechrural.com.au

HO - 8 Ribbon Gum Ave, Armidale, NSW, 2350

W1 - 260 Ring Rd, Wendouree, VIC, 3355

W2 - 117 Tasman St, Devonport, TAS, 7310



**FAMILY OWNED
SINCE 1998**

www.rotechrural.com.au